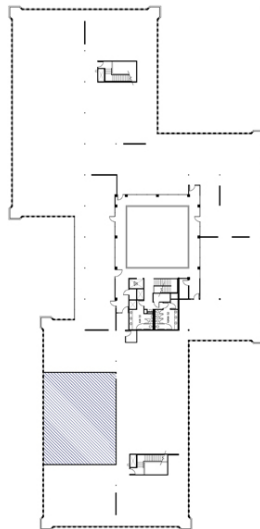




Floorplan



Features and Amenities

- Adjacent to the Iron Horse biking and jogging trail
- Free and abundant parking
- Suites from 900 SF to 10,000 SF



## BR11

2301, 2303, 2305 Camino Ramon  
San Ramon, CA 94583

With more than 25 medical practitioners, BR 11 has become the Bishop Ranch Medical Center. This three-building complex offers 145,989 RSF of medical/dental or office space.

BR 11 is located less than half a mile from the San Ramon Regional Hospital, and the medical offices cater to our 30,000 employees and the local community.

Bishop Ranch is situated on 585 acres in scenic San Ramon Valley, California. Recognized nationally as one of the premier business addresses in the country, the business community is home to more than 550 of the world's leading companies, from established global 500 companies to innovative startups. Bishop Ranch offers an impressive portfolio of buildings, state-of-the-art infrastructure and unparalleled customer service.

Located along the thriving I-680 corridor, Bishop Ranch is easily accessible from anywhere in the Bay Area by car and public transit.

## Highlights

- 585 landscaped acres
- 50 + Buildings
- 30,000 employees
- 10 million square feet
- On-site property management
- Architecture, engineering, and construction development services
- State-of-the-art infrastructure
- Free BART express bus service to and from Dublin and Walnut Creek BART stations
- On-site dining and retail services
- Proximity to shopping and recreation
- 375-room Marriot on-site

## Contact BR Leasing

Josh Hitchcock  
Conor Deal  
925.866.0100  
leasing@bishoranch.com

